



Webspace Version 5.0 from GE Digital

Deliver advanced control and visualization over iPad, Android, and a Web browser

Increase operator agility and effectiveness to improve business performance

Webspace from GE Digital offers an easy-to-use, full-featured Web and mobile client that enables you to extend, expand, and enhance your new or existing iFIX or CIMPLICITY applications systems from GE Digital. It enables full control and visualization over your company Intranet or secure Internet without the need to change or alter your software application and can be set up within minutes.

Outcomes

- Increase information sharing across teams with a full-featured, secure-by-design Web and mobile client for iFIX or CIMPLICITY
- Speed the right actions with model-based navigation and quick access to information over the Internet, anywhere
- Save time with zero client configuration and the ability to port screens instantly
- Decrease costs with one server that renders three applications on your choice of client, including iOS, Android, and browser access
- Boost flexibility by dynamically adjusting control points on-the-fly and viewing multiple systems simultaneously
- Improve analytical and planning abilities with real-time data and information viewing

With Webspace, you can reduce costs, improve time to action, and expand analytic capability—driving sustainable advantages across all levels of your business, including management, operators, engineering, and IT levels.

01 Extend your HMI/SCADA with the power of the Industrial Internet

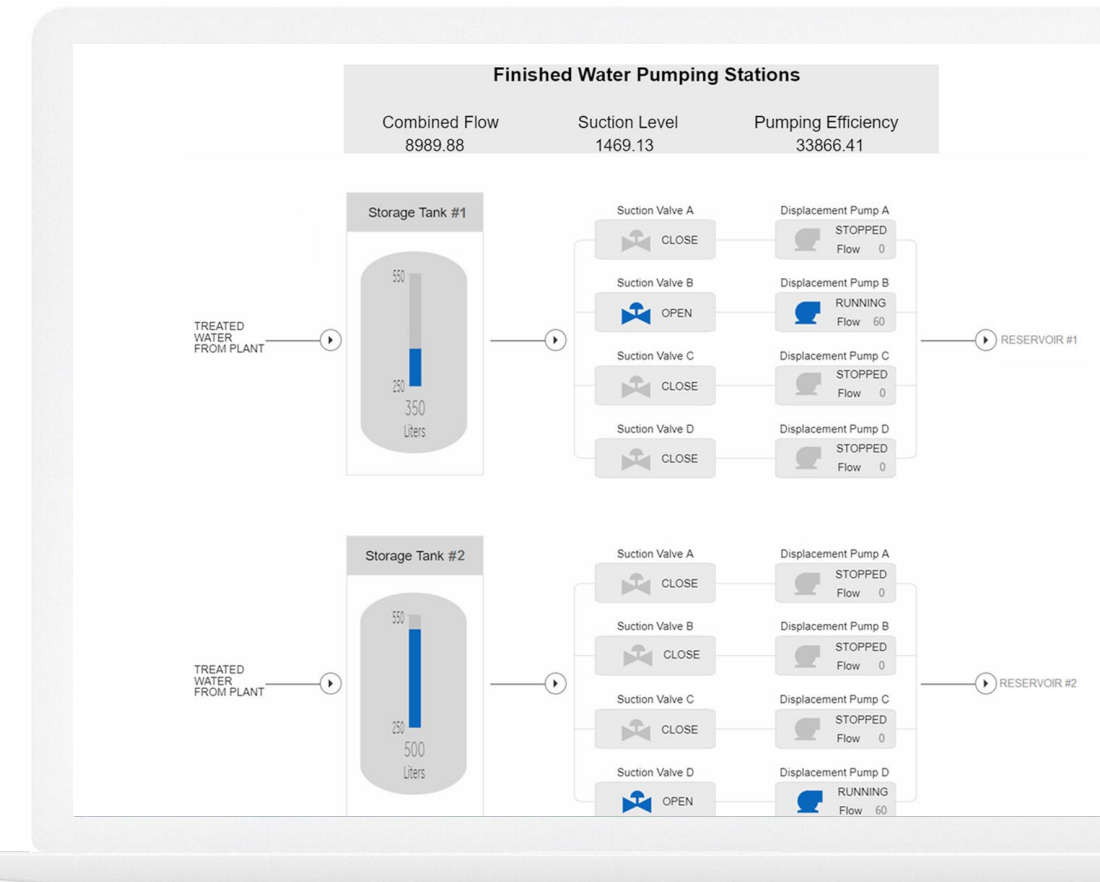
Webspace extends your iFIX and CIMPLICITY system viewing and control abilities right into a Web browser or tablet. Webspace doesn't compromise your proven applications, graphics, or functionality—providing a full-featured client and delivering comprehensive functionality over a browser.

02 Increase information sharing with flexible, secure-by-design technology

With support for up to 70 simultaneous clients, Webspace enables new and existing systems to be dynamically expanded across the facility or globe. The solution enhances your user experience with the ability to run multiple Webspace clients and view many systems from one point. Additionally, Webspace allows you to manually configure a sandbox and white list entries for files and programs.

03 Gain full-featured mobility with the SCADA app

Easily and quickly harness the power of your HMI/SCADA on iPad or Android devices with minimal engineering effort. Download the free SCADA app and instantly connect to your runtime projects, and leverage the same full-featured capabilities of a standard client with full HMI/SCADA functionality, including third-party app support with no screen conversions required.



Webspace extends your application viewing and control abilities right into a Web browser—without compromising features, graphics, or functionality.

"There's a time savings, and it lowers the complexity of our system... they have all the features of the control room in their hands."

John D'Aoust, Plant Manager
City of Haverhill—Water Division



Webpace Version 5.0 from GE Digital

Deliver advanced control and visualization over iPad, Android, and a Web browser

Features

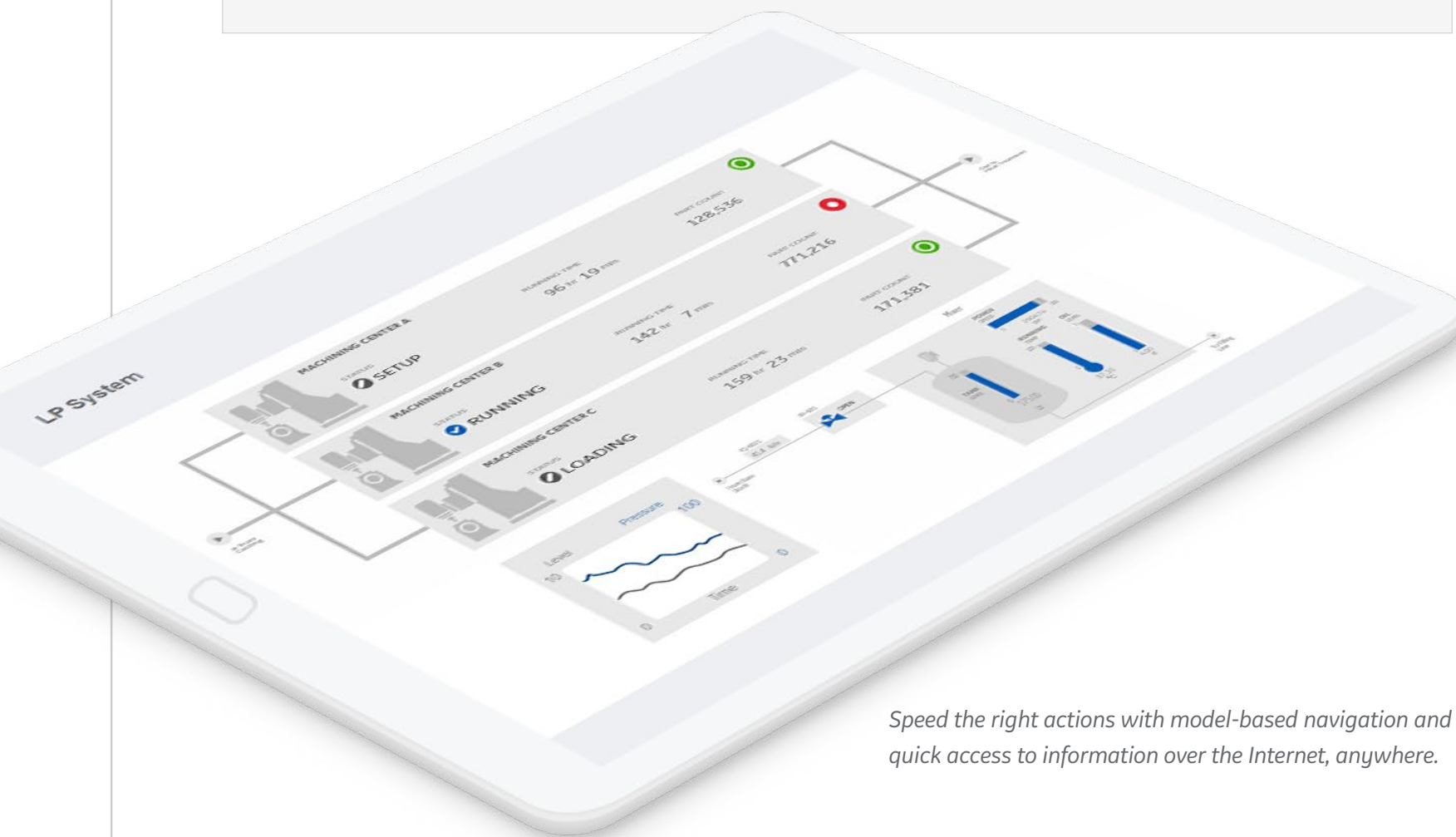
- New client-side scaling support for high-resolution devices
- Mobile client UI improvements, including new gesture support
- Load balancing and high availability
- Full-featured Web and mobile client for iFIX or CIMPLICITY—with one server and real-time data updates
- Zero client configuration, no third-party software required
- No restrictions on secure containment of third-party controls; launch third-party apps triggered in iFIX or CIMPLICITY, control elements operable within Webpace and inherit security setup
- External access over the Internet, multi-tab browser support, remote access for debug and support
- E-signature enhances security and audit trail
- Support displays with animations
- View, acknowledge, and silence alarms and warnings
- Administration: Client disconnect, client session shadowing, SSL 56 or 128 bit encryption, port selection, maximum client limit

Software requirements

Webpace has many flexible configuration topologies and can be installed either on an independent dedicated server or your main application server.

- Server
 - · Windows 10, 8.1 and 8: Professional and Enterprise Edition (64 bit)
 - · Windows Server 2016 and 2012 R2: Standard and Datacenter Edition (64 bit)
 - · Windows Server 2012: Standard Edition (64 bit)
 - · Windows Server 2008 R2 with SP1: Standard and Enterprise Edition (64 bit)
 - · Windows 7 with SP1 (x64): Professional, Ultimate and Enterprise Edition (64 bit)
- Full VM Support including: VMware vSphere, Microsoft Hyper-V, and Citrix XenServer
- Web browsers
 - Microsoft Windows Internet Explorer
 - Mozilla Firefox
 - Apple Safari
 - Google Chrome

Hardware and software requirements are representative and may vary by customer deployment. Please consult the product documentation for more details.



Speed the right actions with model-based navigation and quick access to information over the Internet, anywhere.

Speed response to HMI/SCADA events and data by sharing information anywhere, anytime with Webpace for iPad, Android, and a browser.

LEARN MORE





Webpace Version 5.0 from GE Digital

Deliver advanced control and visualization over iPad, Android, and a Web browser

Services

In the world of Industrial Internet of Things (IIoT), organizations are able to optimize productivity, reduce costs, and achieve Operational Excellence. While this is an exciting time for opportunity and growth, it can also bring on new challenges, questions, and uncertainty. No matter where you are on your IIoT journey, GE Digital has the right services offering for you.

[Advisory Services](#) We can help you plan and start your IIoT journey in a way that aligns to your specific business outcomes.

[Managed Services](#) We can help you maintain your critical machines from one of our remote locations around the world using model-based predictive-analytic technology.

[Implementation Services](#) Our experienced global Automation partners can implement a collaborative, multi-generational program that marries your existing investments to the right enhancements and technology.

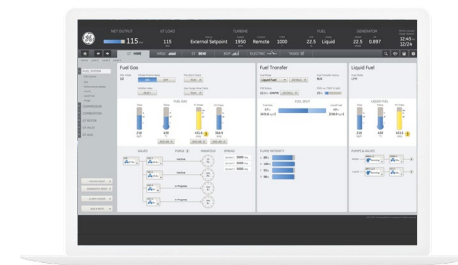
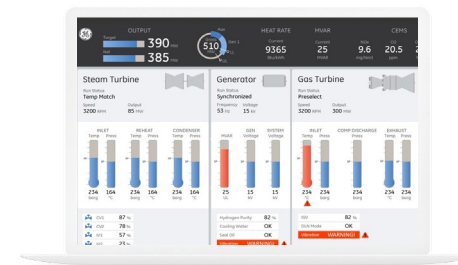
[Education Services](#) We specialize in education services to ensure that you're leveraging our solutions to the fullest extent with our training and certificate programs.

[Acceleration Plans](#) Let us help by ensuring that your business continues to operate at its highest efficiency, all while mitigating risks to your investments.

[GE Digital Cyber Security](#) Our solutions provide industrial-grade security for a wide range of OT network and application topologies.

Related products

GE Digital's [HMI and SCADA](#) helps you precisely monitor, control, and visualize every aspect of your operations, enabling operators to make the best decisions faster.



PREDIX

[iFIX](#) →

Gain visibility into your operations and secure agility for smarter decision making that drives results.

[CIMPLICITY](#) →

Drive real-time visibility for smart operators with true client-server-based visualization and control.

[Predix](#) →

Innovate and transform your business with the cloud-based operating system for the Industrial Internet, purpose-built for industry.

Continue your IIoT journey

Transforming your business requires innovative foundational solutions that lay the groundwork for optimized performance.



[Cyber Security for OT](#) →

Take the right actions to increase resilience, help ensure safety, and maintain availability across your operational technology (OT) environment.



[Workflow](#) →

Guide operators with dynamic, interactive electronic work instructions and eSOPs for more consistent operations and optimized processes.



[Historian](#) →

Optimize asset and plant performance through time-series industrial data collection and aggregation, leveraging Predix IIoT connectivity.

About GE

GE (NYSE: GE) is the world's Digital Industrial Company, transforming industry with software-defined machines and solutions that are connected, responsive and predictive. GE is organized around a global exchange of knowledge, the "GE Store," through which each business shares and accesses the same technology, markets, structure and intellect. Each invention further fuels innovation and application across our industrial sectors. With people, services, technology and scale, GE delivers better outcomes for customers by speaking the language of industry.

Contact

Americas: 1-855-YOUR1GE (1-855-968-7143)
gedigital@ge.com
www.ge.com/digital